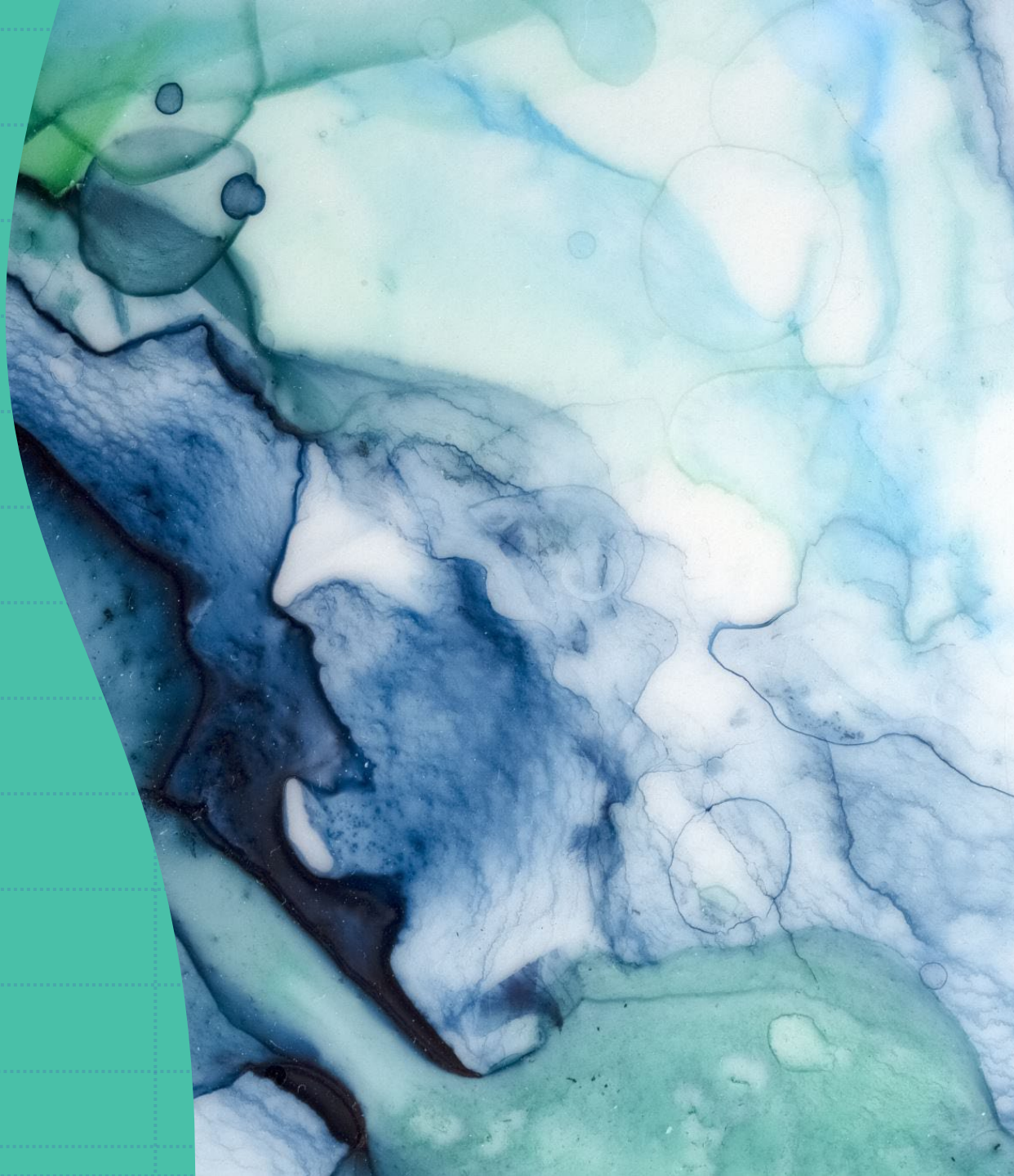




**Barunga West
Council**

Coastal Protection Initiatives



Barunga West Council area

Coastal townships

1. Port Broughton
2. Fisherman Bay
3. Tickera



Coastal threats



Sea-based threats



Land-based threats



Sea-based threats

According to Port Broughton Coastal Adaption Plan (June 2018):

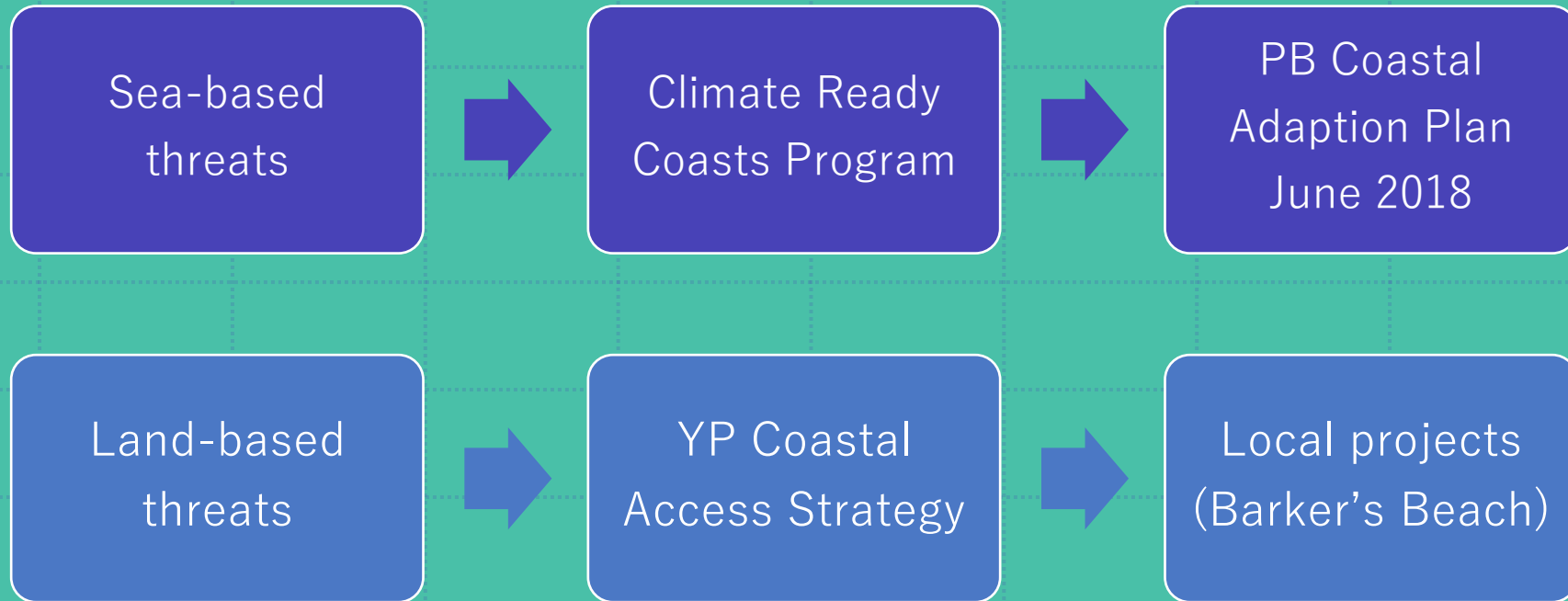
Threat	Result
Rising sea levels	<ul style="list-style-type: none">• Inundation/flooding• Erosion
Increased storm activity	<ul style="list-style-type: none">• Inundation/flooding• Erosion
Sediment transport process	<ul style="list-style-type: none">• Boat ramp and revetment are affecting sand deposits on beach → beach profile has been unable to recover



Land-based threats

Threat	Result
Increased visitor numbers	<ul style="list-style-type: none">• Accidental/willful damage• Antisocial behaviours• Destruction of native vegetation for firewood• Littering• Inappropriate toileting
Increased off-road vehicles	<ul style="list-style-type: none">• Damage to dune flora• Damage to dune fauna/birdlife• Damage to dune structure → erosion

Solutions



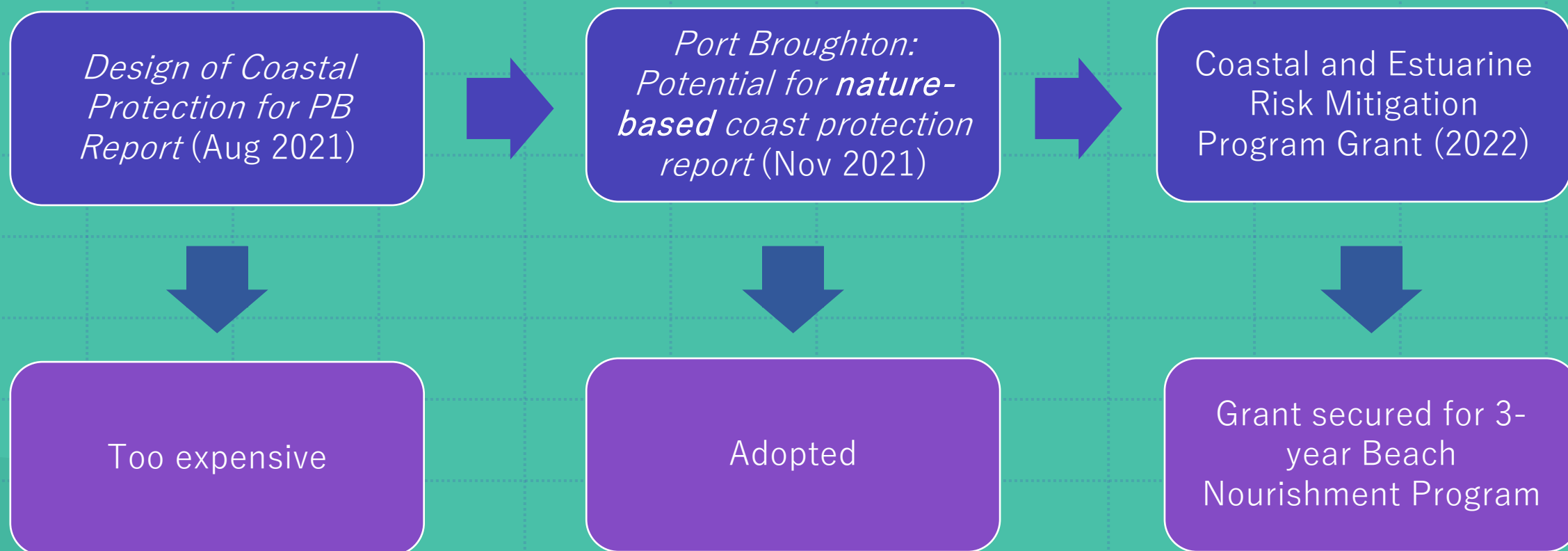
PB Coastal Adaptation Plan (June 2018)

Recommendations

- Beach nourishment
- Nature-based solutions (enhance samphire community)
- Waterproof houses → remove houses
- Repair/replace revetment
- Upgrade/replace/extend seawall

This led to . . .

Evaluation process



Projects

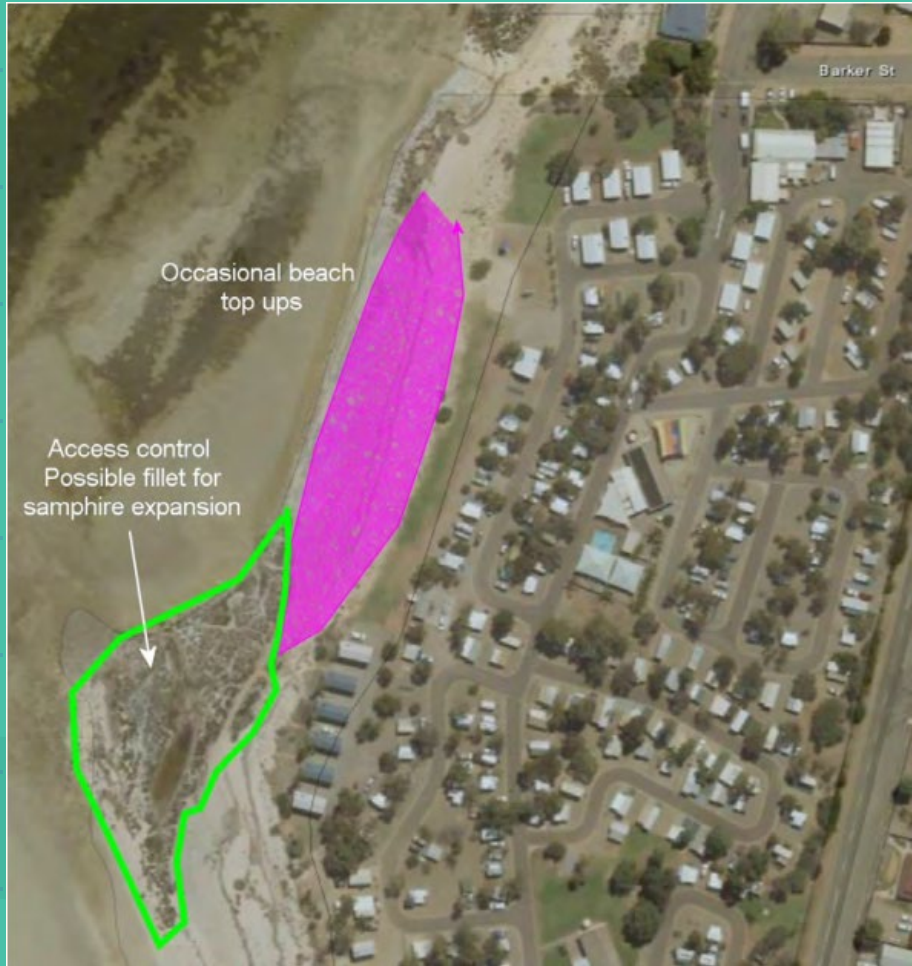
- **Sea-based threats / Climate Ready Coasts**
 - Port Broughton Beach Nourishment Program
 - Fisherman Bay Coastal Protection
- **Land-based threats / YP Coastal Access Strategy**
 - Barker's Beach

Port Broughton Beach Nourishment

- Timescales:
 - 2023 - 2025
- Elements:
 - Sand replenishment
 - Sand monitoring
 - Revegetation
- Locations:
 - Tourist Park
 - Dalling Street
 - West Terrace
 - John Lewis Drive



Sand replenishment



- Stage 1: 400m³
- Stage 2: 400m³
- Stage 3: 400m³

Tourist Park

Sand replenishment



Dalling Street



- Stage 1: 600m³
- Stage 2: 600m³
- Stage 3: 600m³
- Stage 4: 600m³

Sand replenishment



- Stage 1: 600m³
- Stage 2: 600m³
- Stage 3: 600m³

West Terrace

Sand replenishment



John Lewis Drive



- Stage 1: 100m³
- Stage 2: 100m³
- Stage 3: 100m³
- Emergency (storm 17/10/24): 100m³

Sand monitoring

Beach Monitoring Map : Port Broughton Tourist Park & Dalling Street



Map data is compiled from a variety of sources and hence its accuracy is variable.

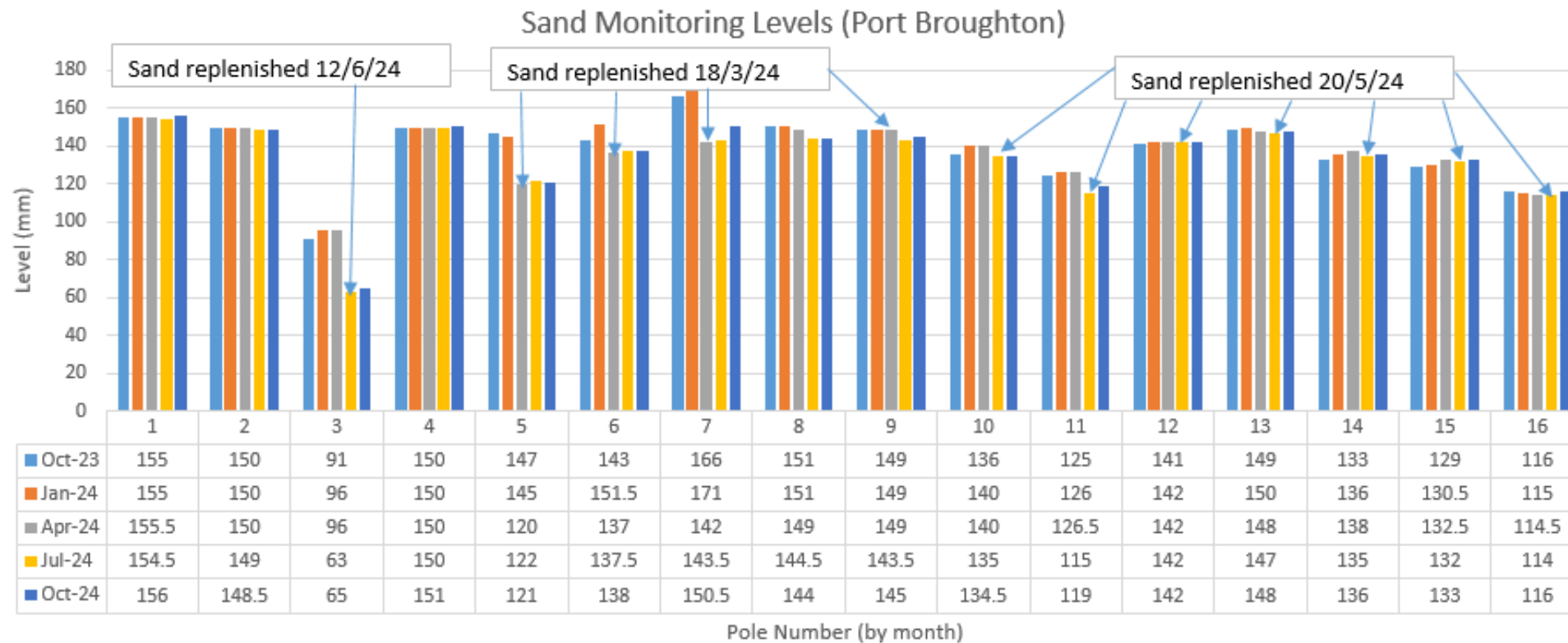
Compiled: 12-Jul-2023
Generated at: www.naturemaps.sa.gov.au
Datum: Geocentric Datum of Australia, 2020
Projection: Web Mercator (Auxiliary Sphere)

Copyright © Department for Environment and Water 2023. All Rights Reserved. All works and information displayed are subject to Copyright. For the reproduction or publication beyond that permitted by the Copyright Act 1968 (Cth) written permission must be sought from the Department. Although every effort has been made to ensure the accuracy of the information displayed, the Department, its agents, officers and employees make no representations, either express or implied, that the information displayed is accurate or fit for any purpose and expressly disclaims all liability for loss or damage arising from reliance upon the information displayed.



Sand monitoring

Sand levels 2023 - 2024 (chart compiled 22 October 2024)



Locations

1	JLD1
2	JLD2
3	JLD3
4	WTN1
5	WTN2
6	WTS1
7	WTS2
8	WTS3
9	WTS4
10	DS1
11	DS2
12	DS3
13	DS4
14	TP1
15	TP2
16	TP3

Revegetation

- Due to commence in 2025

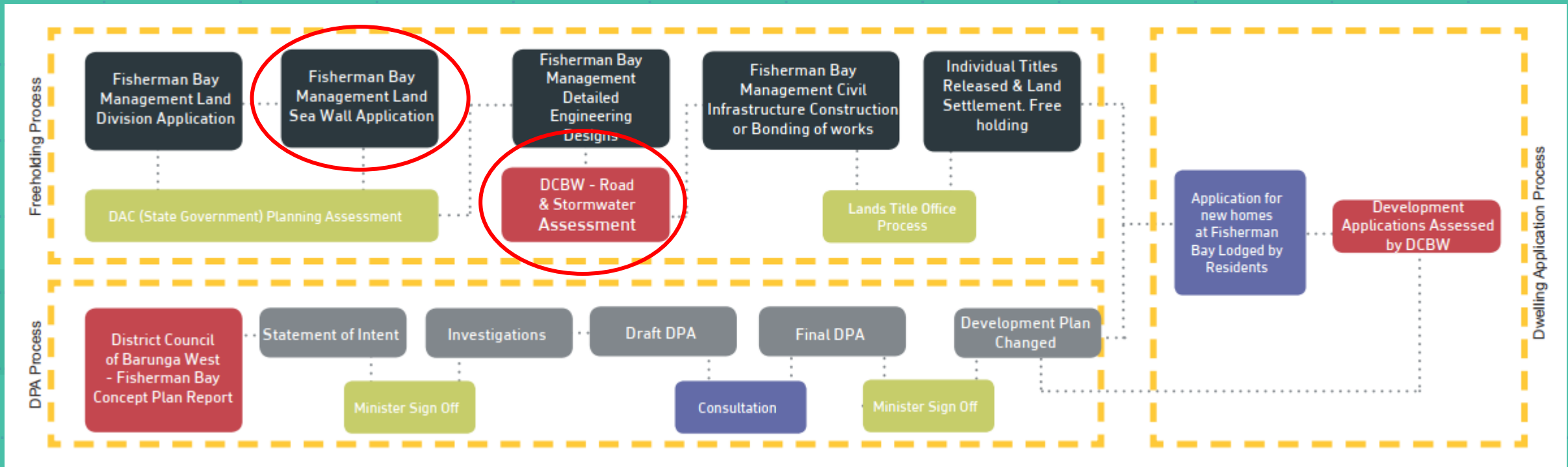
Fisherman Bay Coastal Protection



High tide: 30 May 2022

Fisherman Bay Coastal Protection

- Part of Fisherman Bay Freehold Process (2015):
 - Seawall and earthen levy + stormwater management



Fisherman Bay Coastal Protection

- Seawall



Fisherman Bay Coastal Protection

- Earthen levy



Fisherman Bay Coastal Protection

- Dunny Lane



Fisherman Bay Coastal Protection

- Stormwater pond (after storm on 17 October 2024)



YP Coastal Access Strategy

Pros

- Beautiful beaches
- Fishing
- Boating
- Surfing
- Walking
- Camping

Cons

- High volume of free camping and off-road vehicles
- Disturbance and destruction of Nharangga heritage sites
- Rubbish and pollution
- Damage to dune and cliff systems
- Harm to native animals
- Destruction of native vegetation in dunes
- Pest animals
- Spreading of weeds in dune systems
- Damage to marine habitats via fishing
- Trespassing and vandalism of public and private property
- Unsociable and unsafe behaviours
- Destruction of peaceful environment
- Fire risks from campsites

Challenges to coastal management

- Rapid increase in the number of people using off-road vehicles
- Many people do not understand or care about their impact
- Variety of land tenures across coastal zone
- Complex suite of relevant legislation and regulations
- Many Nharungga heritage sites are not recorded
- Large area to manage
- Limited staff and funding
- Limitation on delivering regular compliance
- Roles and responsibilities are complex and often overlap

Collective Commitment Statement

- To support the Guuranda-Yorke Peninsula Coastal Access Strategy, between:
 - Barunga West Council
 - Copper Coast Council
 - Yorke Peninsula Council
 - Northern and Yorke Landscape Board

Barker's Beach, Tickera

- Crown Land with license to BWC
- History of informal camping
- Since COVID-19 increase in visitors and anti-social campers



Barker's Beach, Tickera

Issues

- Litter, toileting and firewood collection from area and from neighbouring properties
- Dune bashing – destroying flora, fauna and dune structure



Barker's Beach, Tickera

Proposed solutions

- Ban camping
- Convert to Day Visitor Area
- One access point to beach
- Fence off dune access
- Revegetate

Blue line is the proposed fence. Fence will need to be robust enough to deter vandalism, but relatively affordable to repair or replace given likelihood of vandalism. Red line is bollards/posts delineating the day area. Posts around day area will ensure that area looks 'tidy' and actively cared for.†

Red pins are probable points of entry that will probably need some form of reinforcement or deterrence (boulders, coir logs, bollards etc) to discourage vandalising or removing the fence. These can be moved around depending on the lay of the land.†

Revegetate tracks at visible locations with tube stock.†

Bollards to meet existing property fences, or logical start point where no room is allowed for new tracks?†

Map data is compiled from a variety of sources and hence its accuracy is variable.

Copyright © Department for Environment and Water 2024. All Rights Reserved. All marks and information displayed are subject to Copyright. For the reproduction or distribution beyond that permitted by the Copyright Act 1968, written permission is required from the Department. Although every effort has been made to ensure the accuracy of the information displayed, the Department, its agents, officers and employees make no representation, either express or implied, that the information displayed is accurate or fit for any purpose and expressly disclaims all liability for loss or damage arising from reliance upon the information displayed.

Compiled: 12-Sep-2024
Generated at: <http://maps.env.sa.gov.au>
Datum: Geocentric Datum of Australia, 2020
Projection: Web Mercator (Auxiliary Sphere)

